



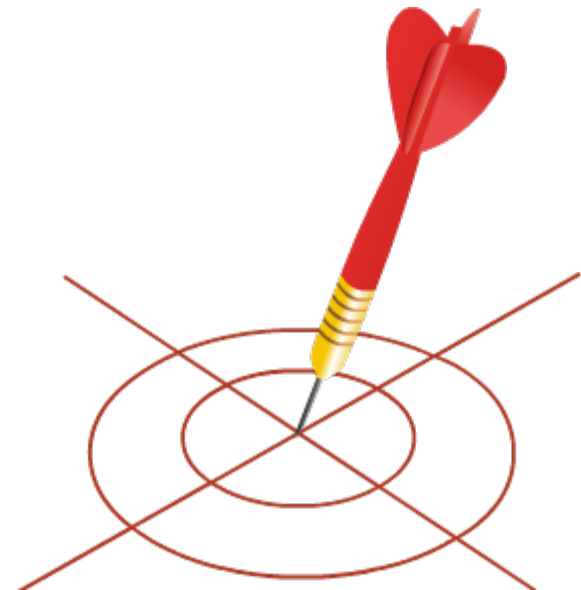
**Welcome to the Session on
Prepaid Meter**

Learning Objectives



By the end of this session, you will be able to:

- Explain the functioning of a prepaid meter and how it calculates the amount in terms of energy consumed
- Explain the benefits and tamper-proof features of a prepaid meter



Prepaid Meter – Introduction



Prepaid meter is used in government offices and multi-storeyed buildings to ensure revenue realisation of consumed energy.

Prepaid Meter Vs Post-Paid Meter



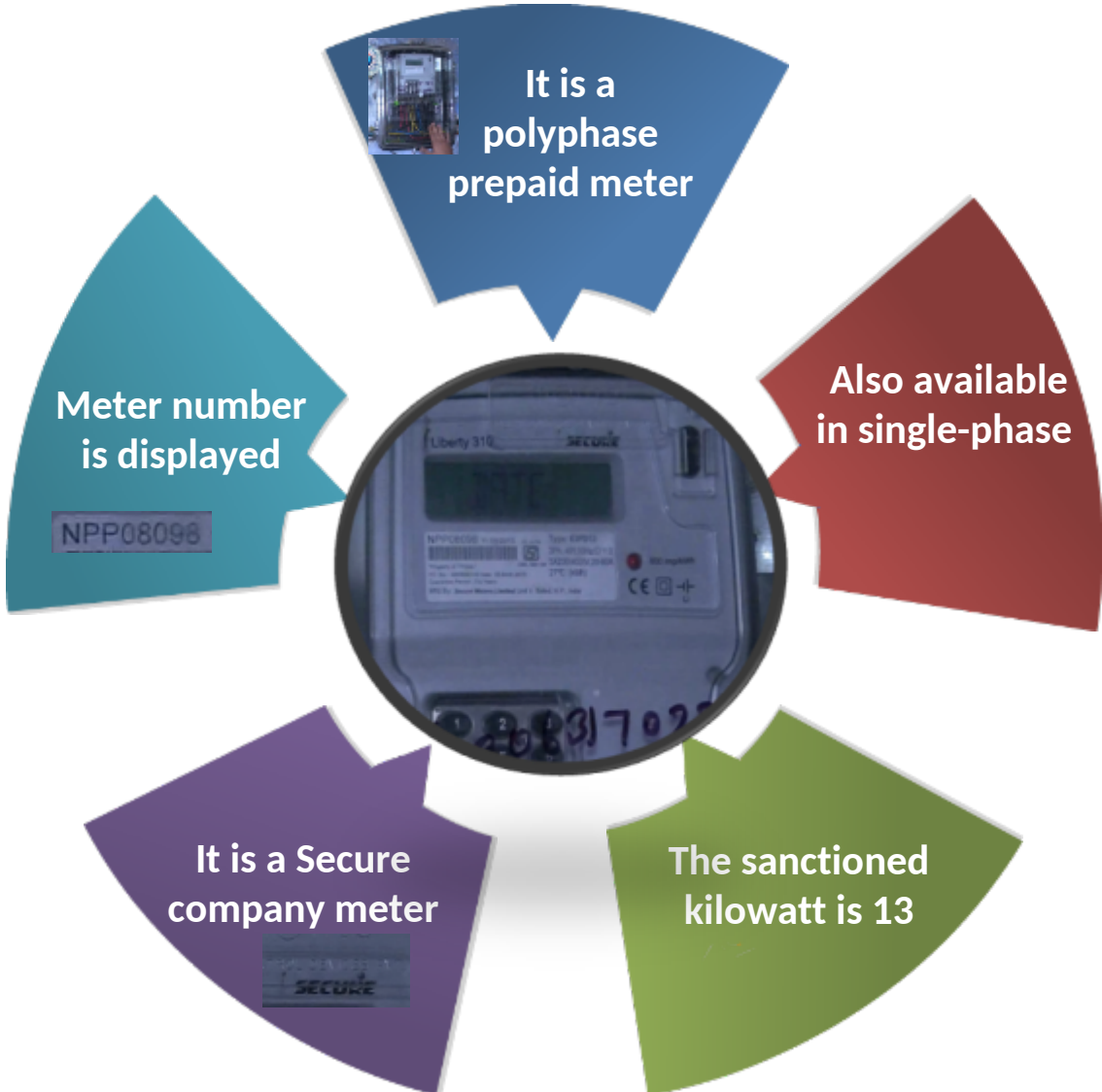
Prepaid meter - Electricity can be used based on the recharge coupon



Postpaid meter - Consumer gets the bill based on the reading of consumed current



Prepaid Meter – Introduction



Features and Benefits of Prepaid Meter



- A consumer can see the reading, consumption and billing in the meter
- If there is any misuse or additional consumption, it will show in the readings
- Consumer can compare it with previous month's consumption
- The balance will be deducted on daily basis and the month-end bill will be prepared
- Consumer can check whether he is being charged correctly by the department
- Avoids disputes between tenants and house owners



Benefits of Prepaid Meter

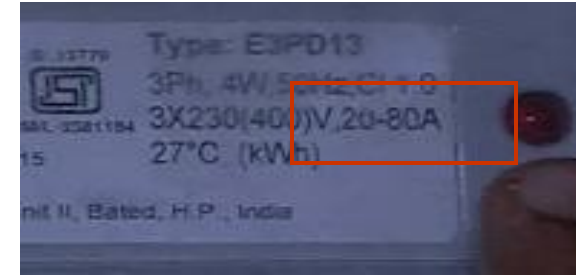
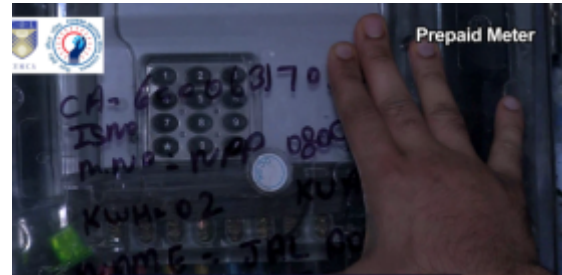
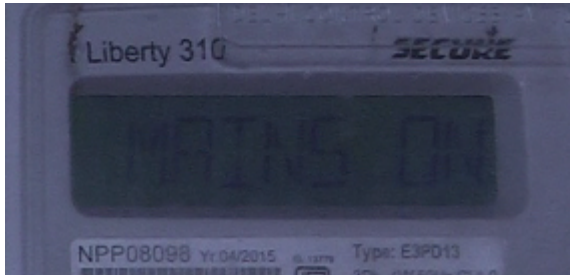


Benefits of a prepaid meter from utility point of view include:

- Money is received in advance before consumption, known as 'advance payment'
- The process of revenue cycle will be streamlined



Prepaid Meter



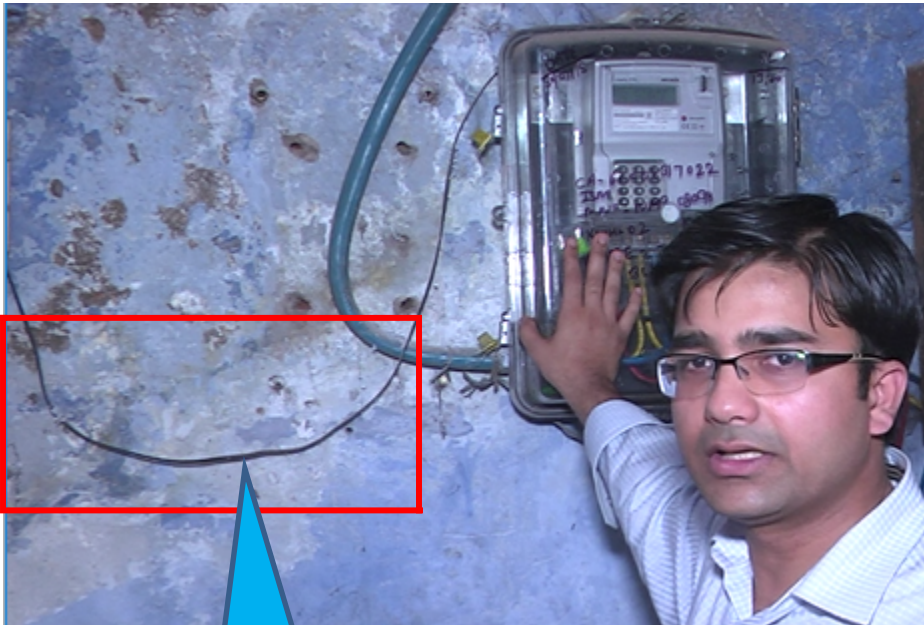
Displays Mains on, Date and Time

Three-phase class 1 meter

20/80 rating meter



Prepaid Meter

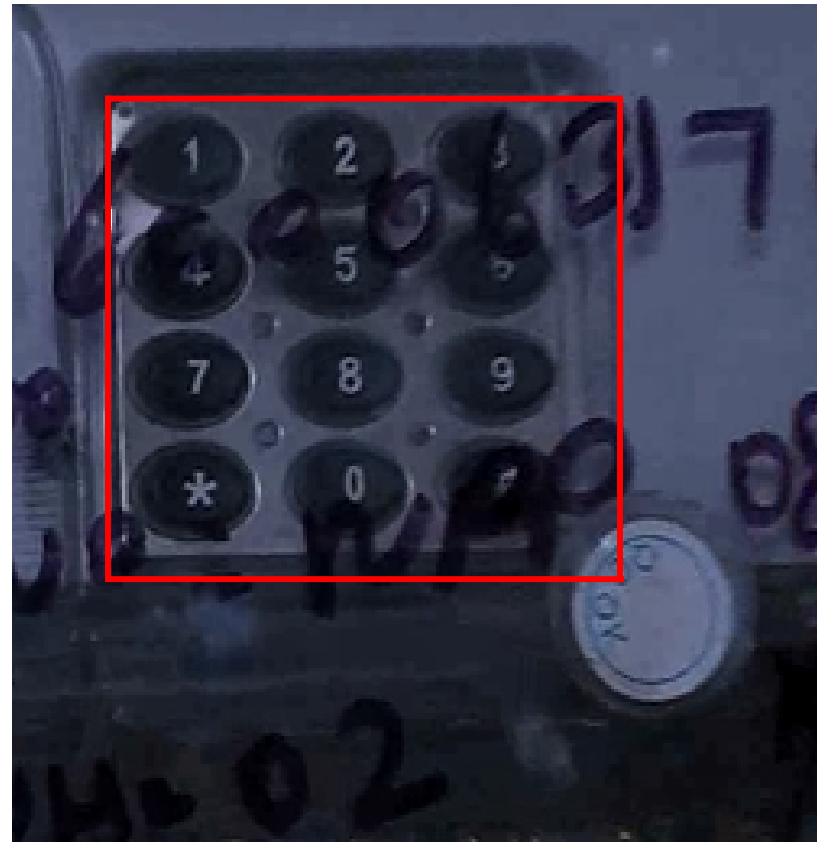
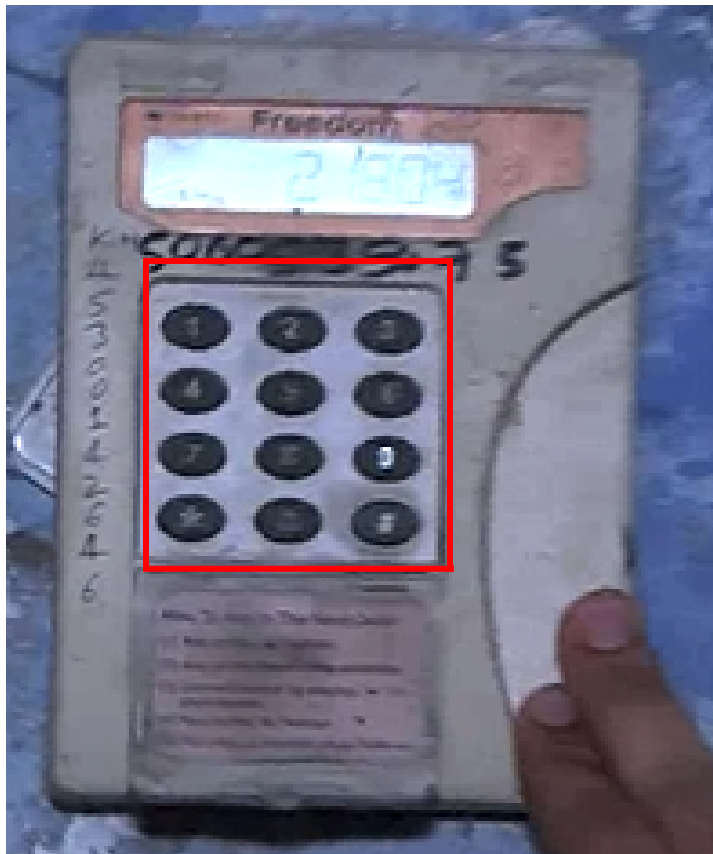


Telephone wire

Freedom unit



Prepaid Meter



**Numeric pad on
both meters**

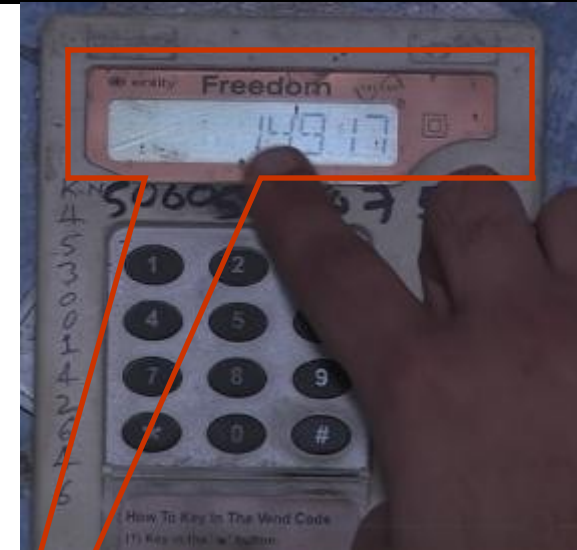
Prepaid Meter



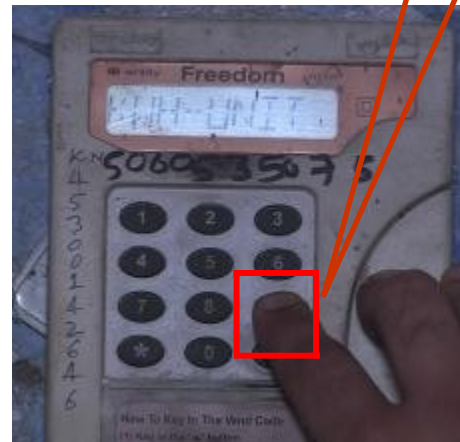
Meter is on



Amount is displayed

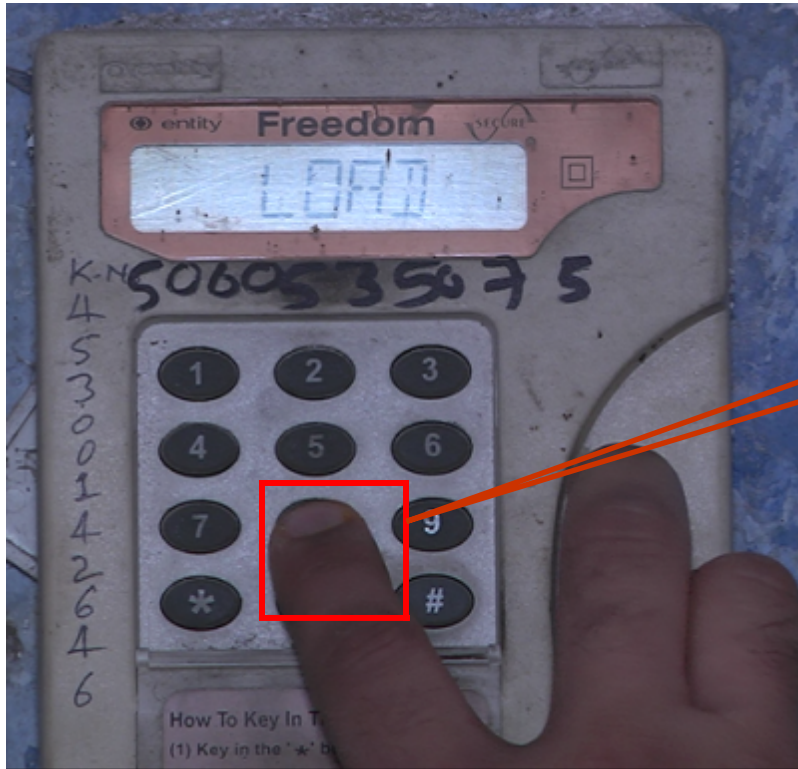


Reading is displayed

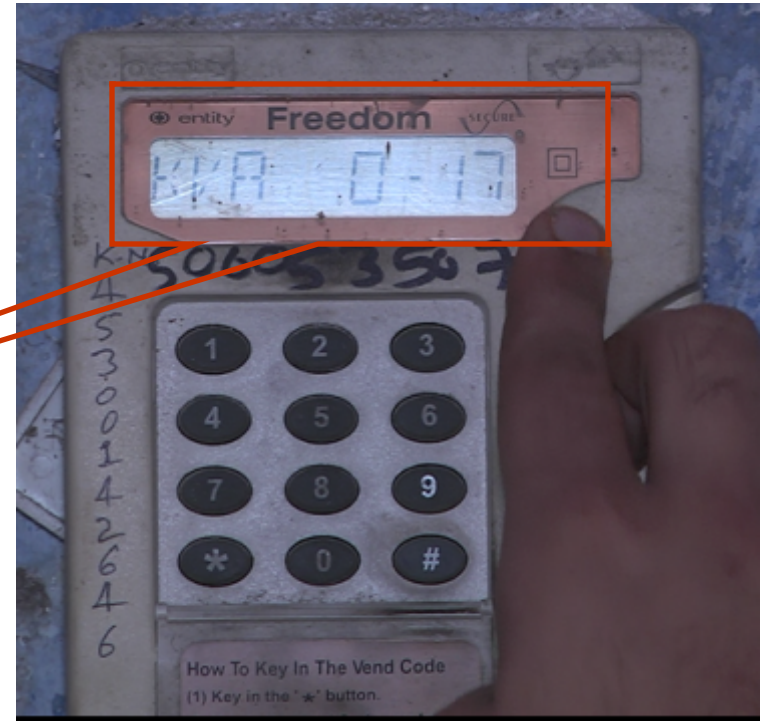


9 is pressed

Prepaid Meter



8 is pressed



Amperage is displayed

Prepaid Meter



A consumer can:

- Monitor his daily activities, operations and requirements on electricity consumption according to his needs
- Check whether the meter is fast or slow
- Check if it is charging more or if it is preparing incorrect bills



Key Learning Outcomes



- A prepaid meter is installed at the consumer's place
- The bill for a post-paid meter is prepared based on the reading of consumed current
- A consumer can check the balance of current consumption with the help of a prepaid meter
- Money is received in advance before consumption in a prepaid meter
- The process of revenue cycle will be streamlined
- A consumer can monitor his daily activities, operations and requirements on electricity consumption according to his needs

