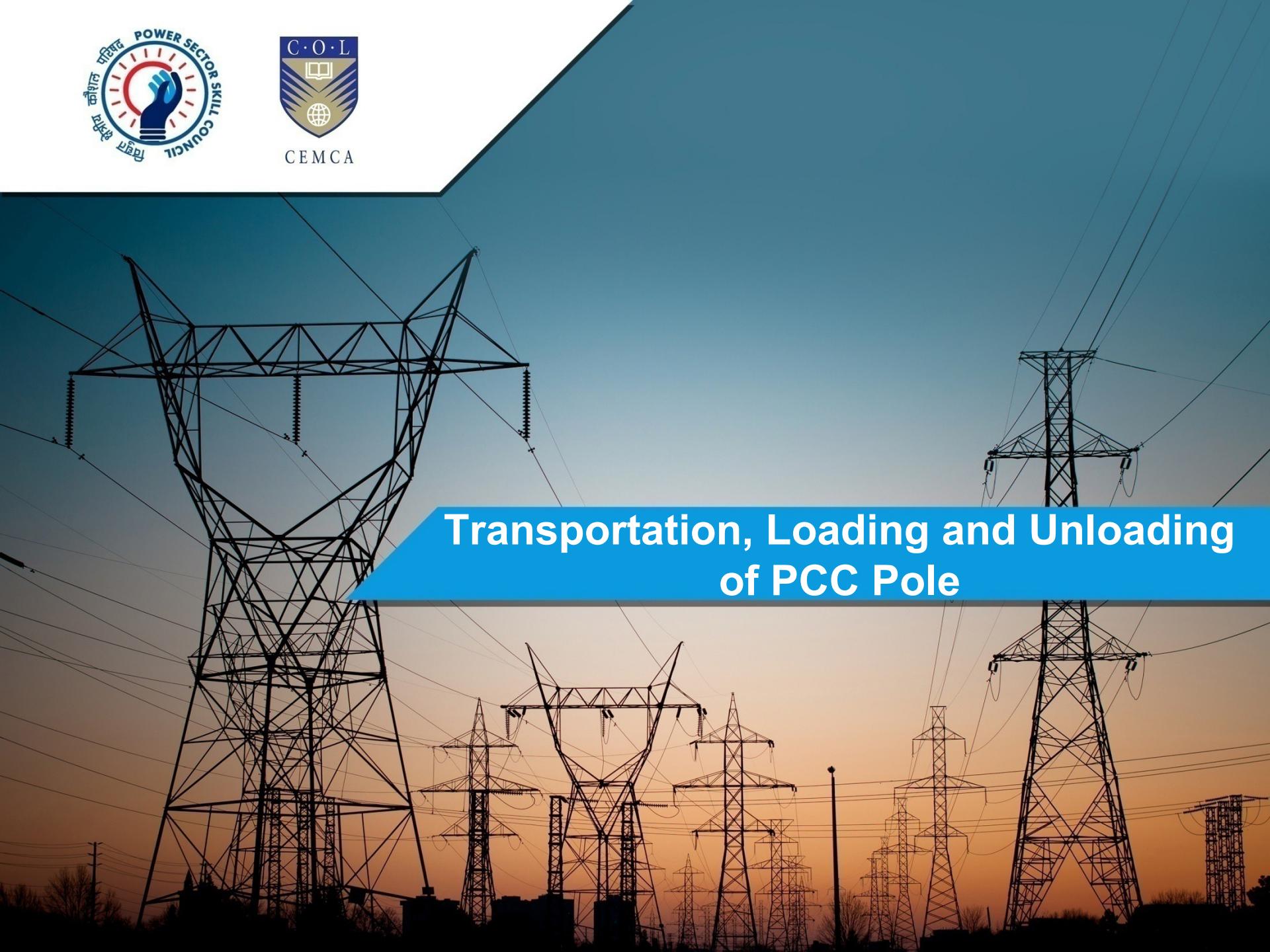




# Transportation, Loading and Unloading of PCC Pole



## Learning Objective

By the end this session, you will be able to:

- Identify the correct and incorrect methods of loading, unloading and carrying poles on a handcart



## Identify the Risk



- A small cycle rickshaw is overloaded with vegetables
- There may be an imbalance
- May result in accident or loss of goods

- **2 cycles:** Gas cylinders are tied to the cycles
- The rope knots may become loose
- **Rickshaw:** Carrying a heavy load
- The person may lose control and the goods may topple



## Identify the Risk



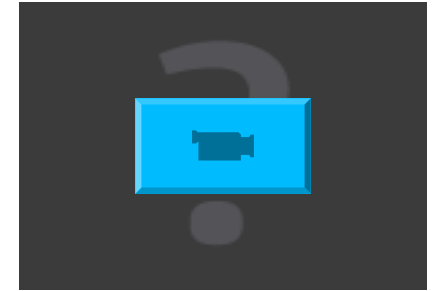
- **Positive Point:** Poles are tied
- **Risk:** No red cloth or any indication about the poles being carried
- Red cloth will warn other vehicle drivers to drive carefully near the cart

# Methods of Transporting LT PCC Pole - Introduction

Handling of

LT poles are 9 meter in length  
whereas HT 11 kV poles are

- **LT pole:** 9 metres long
- **HT 11kV pole:** 11 metres long
- There is no difference in carrying the two types of poles



Minor axis with smaller width



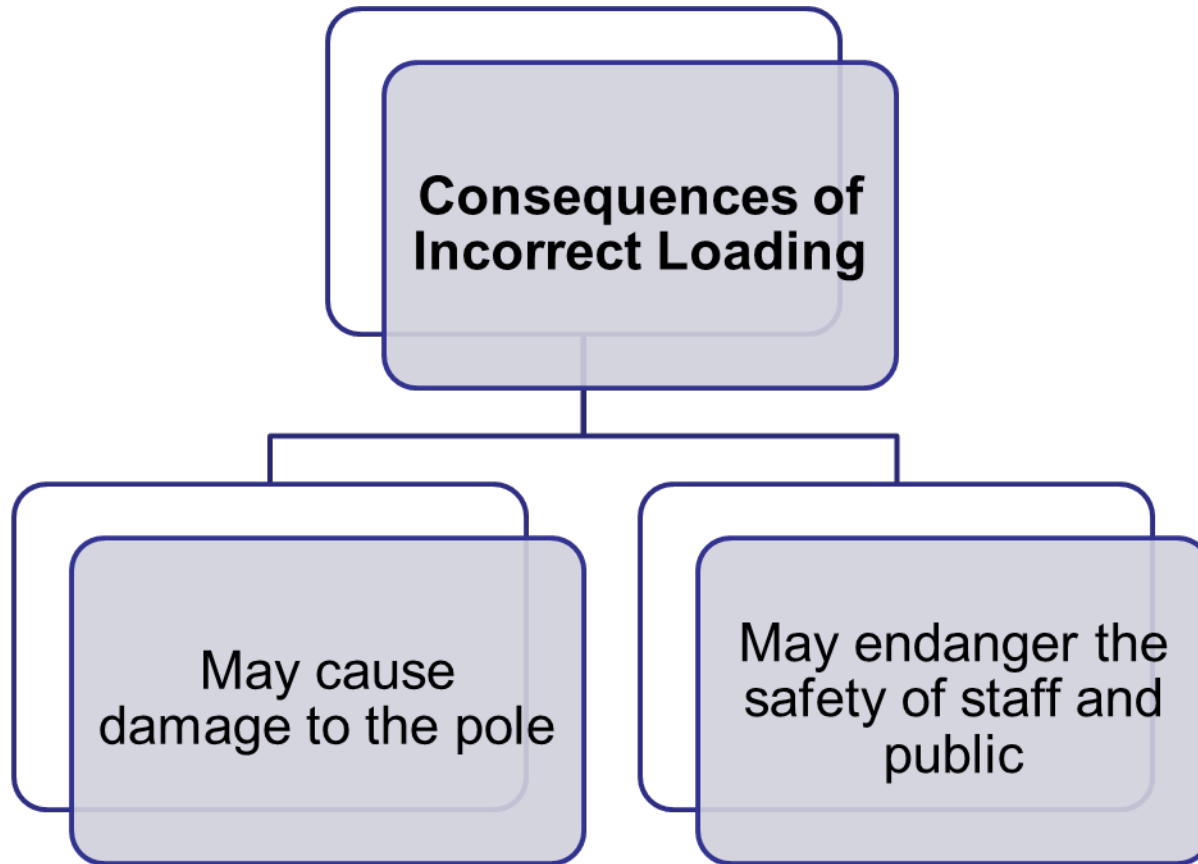
Major axis with larger width

# Open House Discussion

- Can you think of the common mistakes that power sector workers do while lifting poles?
- What are the consequences of loading the pole incorrectly?



# Consequences of Incorrect Loading



# Incorrect Method of Transporting PCC Pole



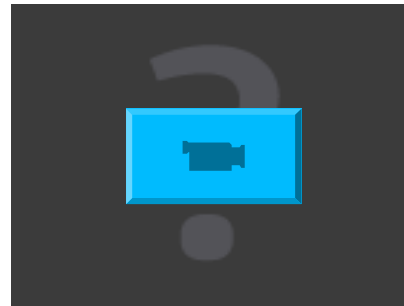
Handcart is placed beside stack



PCC pole is lifted without rod



Individual technical helper losing the grip





# Incorrect Method of Transporting PCC Pole



Placed with a jerk at the edge of the cart



Pole is loaded on major axis



Swing of the pole while balancing

# Incorrect Method of Transporting PCC Pole



Pole is being pulled by the major axis without tying it



Pole has been wrongly loaded



Swing of the pole while balancing

# Correct Method of Loading PCC Pole

## Step 1:

- Place the handcart sideways



## Step 2:

- Insert an iron rod on the MS hook of the upper end of PCC pole on minor axis



# Correct Method of Loading PCC Pole



## Step 3:

- Lift the pole collectively making a rhythm call to lift up the pole to the cart

## Step 4:

- Place the pole on the cart in such a way that the pole's weight remains equal on both sides



# Correct Method of Loading PCC Pole



## Step 5:

- Tie the pole with a rope firmly and fix additional clamps vertically to fix in a position. The pole will not slip or tilt during transportation

## Step 6:

- Safety cone is placed and tied to the end of PCC pole



# Correct Method of Loading PCC Pole



## Step 7:

- MS clamp is tightened to avoid slipping or sliding of the pole



The cone is placed at the front end of pole as danger signage.

# How to Carry and Transport Heavy Materials?



Transportation of 3-metre MS rods of trenchless machine



Handcart welded on the edges to hold and rest the rods.



# How to Carry and Transport Heavy Materials?



Every technician including the supervisor has worn a helmet.



Caution tape on safety cones is placed on the road for clear visibility to alert the public and traffic that men are at work.



## Transportation, Loading and Unloading of PCC Pole

- Technicians reach the pole stack site after crossing the road to place the pole
- Unloading process is the same as that of loading

## Question and Answer

- Can you name the equipment used by a lineman?
- How is the equipment carried?



# Equipment Used by Lineman

Unloading of PC



Safety helmet

Unloading of



Visor

Unloading of



Full body safety harness



# Equipment Used by Lineman



Insulated safety shoes



Insulating rubber gloves



Safety cone

# Equipment Used by Lineman



Ut

CRC spray



Unloading of PC

Screw drivers



Unloading of PC

Lock-out tag-out tags

# Equipment Used by Lineman



Ladder



Rickshaw used for carrying tools and materials

## Key Learning Outcomes

- Linemen must know the correct methods of loading, carrying and transporting PCC poles on handcart
- The common mistakes that power sector workers make while loading PCC poles include:
  - Lifting the pole on its major axis
  - Not tying a rope to the pole before it is lifted
  - Not checking the balance of the pole
- The consequences of incorrect loading include damage to the pole, danger to staff and general public
- A lineman should correctly assemble his working tools and ladder on a manually pulled rickshaw

